



[Research](#)

[Faculty Development](#)

[Student Training](#)

[Community Collaborations](#)



About HPRI

The HPRI serves as a catalyst and focal point for research, training, and community interchange to develop and disseminate evidence-based information and health promotion programs.



Support HPRI

Director's Note

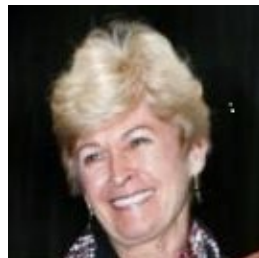
I am proud to share the Health Promotion Research Institute's many activities and successes. One of our latest efforts, the **HPRI Mentorship program**, yielded tremendous outcomes - in just one year our four mentor/mentee pairs submitted 4 symposium abstracts, developed 3 joint manuscripts, submitted 3 articles for publication, and submitted 2 proposals for extramural funding! Please read on to learn more about our events and programs!



Sora Tanjasiri, DrPH, MPH, HPRI Director

Grant Activity

HPRI faculty members have been awarded 16 grants, totaling more than \$2.1 million between July 1, 2014 and June 30, 2015. Twenty-six grants, totaling \$5.1 million were submitted during the same period; several more are currently in progress.



New Committee Member

The HPRI welcomes Dr. Roberta Rikli, interim AVP of Research, Creative Activities and Technology Transfer, to its Steering Committee. Rikli, who served as Dean of the College of Health and Human Development from 2002 to 2010, will provide input on the operations of the HPRI and assist with the advancement of its mission, goals, strategic plan and programs. She will also serve on the Internal

Advisory Committee for the CSUF and UCI-CFCCC Partnership for Cancer Health Disparities Research.

Open House

Approximately 20 faculty and staff participated in the HPRI's second annual Open House. The event, held Sept. 4 in KHS-221, provided an opportunity for faculty and staff to learn about current research projects and collaborative institutional efforts, and to meet other faculty involved in health-related research. Four colleges were represented: Communications, Health and Human Development, Humanities and Social Sciences and Natural Sciences and Mathematics.



RESEARCH

[Click here](#) to make a donation to support HPRI faculty and student research. Please be sure to designate your gift to the Health Promotion Research Institute, Fund No. 81402. Thank you for your support!

AFFILIATED CENTERS

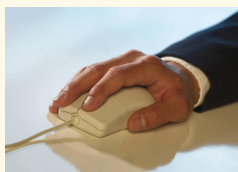
[Center for Cancer Disparities Research](#)

[Center for the Promotion of Healthy Lifestyles and Obesity Prevention](#)

[Fibromyalgia & Chronic Pain Center](#)

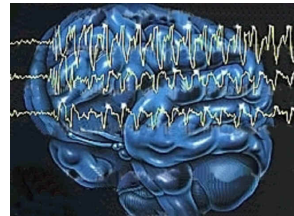
[Institute of Gerontology](#)

[UC Irvine Chao Family Comprehensive Cancer Center](#)



Communicative Disorder

Minimally verbal children with Autism Spectrum Disorder can continue to develop speech sounds despite severe impairment and significantly delayed onset in producing speech sounds, according to a case study by co-authors Drs. Minjung Kim and HyeKyeung Seung (Human Communication Studies). The findings of their research project, *A Longitudinal Study of the Acquisition of English Speech Sounds by a Minimally Verbal Child With Autism Spectrum Disorder: A Case Study*, were published in the June issue of *Communication Sciences & Disorders*, journal of the Korean Academy of Speech-Language Pathology and Audiology. [Read more.](#)



Sleep Study

Dr. Dana Rutledge (Nursing) co-authored an article, *Polysomnography With Quantitative EEG in Patients With and Without Fibromyalgia*. The article, which appeared in the April issue of the *Journal of Clinical Neurophysiology*, is based on a study of the brain waves during sleep of people with and without the chronic pain disorder. [Read](#)

[more.](#)

Innovative Research

HPRI Faculty Member Dr. Tu-Uyen Nguyen (Asian American Studies) received the Outstanding Collaborative Research award at the April 15 Innovations in Faculty Research reception. Steering Committee member Dr. Marcelo Tolmasky (Biological Science) received the Distinguished Faculty Research Award. [Read more.](#)

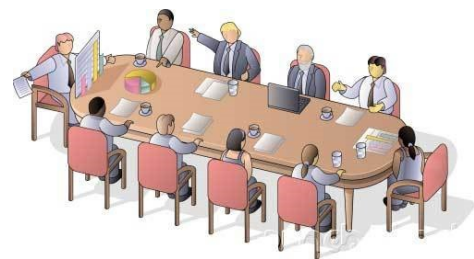


Drs. Nguyen (second from left) and Tolmasky (right)

FACULTY DEVELOPMENT

Fall Faculty Meeting

The HPRI's Fall Faculty Meeting will be held on Tuesday, Oct. 13 from noon-1:30 p.m. in KHS-221. To accommodate varying schedules, the same meeting will also be held on Wednesday, Oct. 14 from 10-11:30 a.m. in EC-605. Among the agenda items, HPRI Director of Research Chandra Srinivasan will lead a training on the Elements of a Grant Proposal, with an emphasis on often-overlooked components.



Best Published Paper

"Let's Move for Pacific Islander Communities: an Evidence-Based Intervention to Increase Physical Activity" received first-place honors for the 2015 Asian & Pacific Islander Caucus for Public Health's Best Published Paper Award. Principal Investigator Sora Tanjasiri and Program Manager Mandy LaBreche will receive the award on behalf of the team on Nov. 3 during the annual APHA meeting.



HPRI TITANIUM Community

An HPRI Community is now available in Titanium Communities for use by HPRI faculty members. This repository houses meeting minutes,

Contact Us

For more information about the HPRI, including additional projects by faculty and students:

Website

hpri.fullerton.edu

Email

hpri@fullerton.edu

Phone

(657) 278-8145

trainings, examples of successful grant proposals and other resources to support research activities. Faculty can access by logging on through the CSUF portal. Click on the "TITANIum Faculty" icon and then "TITANIum Communities."



Call for Applications

Applications for the HPRI's annual mini-grant opportunity are currently being accepted. Awardees will receive a course release for spring 2016 or summer salary to develop their research idea into a submittable grant proposal by the end of the semester. The submission deadline is Nov. 16. Details to be announced at HPRI's Fall Faculty meetings. [Read more.](#)



STUDENT TRAINING



Allied Health Careers

The HPRI has been awarded approximately \$1.8 million from Health Resources and Services Administration to increase the number, quality and diversity of allied health professionals. The three-year project, *North Orange County Allied Health Careers Opportunity Partnership (NOCA HCOP) Program*, is being led by co-Project Directors CSUF Deputy Provost Shari

McMahan and HPRI Director Sora Tanjasari. Community partners include: Cypress College, the Anaheim Unified High School District, the Orange County Asian Pacific Islander Community Alliance and multiple post-baccalaureate allied and other health profession programs and schools at CSUF, Western University of Health Sciences, California State University, Dominguez Hills, and the University of California, Irvine.

Big Data Discovery

Project Leader Dr. Archana McEligot (Health Science) has been awarded \$1 million from the National Institutes of Health for the *Big Data Discovery and Diversity through Research Education Advancement and Partnership (BD3-REAP)*. A faculty-mentored, yet student-owned, intensive big data research experience in neuroimaging, genomics and epidemiologic data types for underrepresented students will be developed and launched during the five-year project.



APHA Student Rep

Harold Custodio, an MPH student and Graduate Research Assistant under the HPRI, has been elected to the American Public Health Association's 2015-2016 Asian & Pacific Islander Caucus for Public Health Board of Directors. Custodio will participate in the group's first in-person meeting on Nov. 1 in Chicago, where he will also present a poster, *Biospecimen Education in Pacific Islander Communities: A Weaving an Islander Network for Cancer Awareness, Research, & Training (WINCART) Center Study*, at APHA's annual meeting and exposition.



COMMUNITY COLLABORATIONS

Professionals Award

MPH Student Ualani Ho'opai (pictured bottom-right) was presented with the CSUF Nonprofit Professionals Alumni Association Professionals Award for her work in the community nonprofit sector. Ho'opai has worked in the local community to serve Native Hawaiian and Pacific Islander populations through engagement with organizations, such as the Pacific Islander Health Partnership (PIHP) and the Ainahau O Kaleponi Civic Club. Her current MPH research project is designed to help promote weight-loss and weight-loss maintenance in underrepresented Native Hawaiian and Pacific Islander populations. [Read more.](#)



In-Service Collaborative

More than 45 oncology medical professionals from CHOC Children's Hyundai Cancer Institute participated in an in-service, *Supporting Pediatric Oncology Patients with Autism Spectrum Disorders*, on April 20 at UC Irvine Medical Center. Co-led by Dr. Erica Howell (Special Education), the training is part of a pilot project supported by the CSUF and UCI-CFCCC Partner for Cancer Health Disparities Research.



Selecting a Caregiver

HPRI Community Advisory Board member Di Patterson, a gerontologist, speaker, author and consultant, was recently featured in a segment on NBC's TODAY show. The program, *How to select a professional caregiver for your kids or a love one*, provided tips on how to shop for a caregiver. [Watch here.](#)

HPRI includes faculty from the Departments of: African American Studies, Anthropology, Asian American Studies, Biology, Chemistry & Biochemistry, Chicana & Chicano Studies, Child and Adolescent Studies, Civil & Environmental Engineering, Communications, Economics, Health Science, Human Communication Studies, Human Services, Information Systems & Decision Sciences, Kinesiology, Nursing, Psychology, Social Work, Sociology, and Special Education.